

SAMUEL WAXMAN
CANCER RESEARCH FOUNDATION

ANNUAL REPORT 2013



SAMUEL WAXMAN CANCER RESEARCH FOUNDATION

ANNUAL REPORT 2013

The Samuel Waxman Cancer Research Foundation is an international organization dedicated to curing and preventing cancer. The Foundation is a pioneer in cancer research, focusing on uncovering the causes of cancer and reprogramming cancer cells. Our mission is to eradicate cancer by funding cutting-edge research that identifies and corrects abnormal gene function that causes cancer and develops minimally toxic treatments for patients.

Through our collaborative group of world-class scientists, the Institute Without Walls, investigators share information and tools to speed the pace of cancer research. Since our inception in 1976, The Foundation has awarded more than \$85 million to support the work of more than 200 researchers across the globe.

OUR VISION

The beginning of the end of cancer? We may not be there yet, but it is our firm belief that, every day, research is bringing us one step closer to the pivotal moment when we defeat cancer once and for all. The Samuel Waxman Cancer Research Foundation (SWCRF) is dedicated to making this dream a reality through the collaborative efforts of our researchers, Board members, partner foundations, and the donors who make it all possible through their unfailing generosity. The SWCRF was founded nearly 38 years ago with the mission to rid the world of cancer through a simple yet pioneering concept: that visionary researchers would collaborate across geographic boundaries to reprogram cancer cells and develop less toxic therapies for patients.

We aim to be transformative in the way we understand and treat cancer. Our open model of collaboration and sharing of information between our researchers augments the potential of their individual projects. Separately, they are formidable forces against cancer. Together, they will advance to a cure. At no other time has our contribution been more important. Continued cuts to research funding by the government threaten to slow the pace of science's most brilliant minds. With your help, the SWCRF will not let this stand.

Our annual Scientific Review and Symposium in New York City is a testament to our commitment to nurturing big ideas in cancer research. Bringing together our nationwide network of investigators to review their progress and exchange ideas reminds us of the power of partnerships. We thank you for **your** partnership in our ongoing work. The men, women and children living every day with cancer depend on us to maintain hope in science. Let us combine our strengths -- from the boardroom, to the laboratory, and to the clinic -- to bring an end to cancer.



MICHAEL NIERENBERG



SAMUEL WAXMAN, M.D.



ROBERT KANTOR

Michael Nierenberg
Chairman

Samuel Waxman
Founder and CEO

Robert Kantor
President

OUR WORK, YOUR VICTORIES

A FEW OF THE MANY WAXMAN WINS

We supported a collaboration between **Mount Sinai** and the **Shanghai Institute of Hematology** that helped to discover a cure for a rare form of leukemia with a 100 percent fatality rate that now has a **95 percent survival rate**.

We created a novel combination of two existing cancer therapies for the treatment of hormone-resistant breast cancer, **producing a new clinical trial** at several New York hospitals led by Mount Sinai.

We pioneered the use of **the first successful liver cancer drug treatment** through an international consortium led by Mount Sinai.

We facilitated the **clinical testing of compounds** from traditional Chinese medicine **in the treatment of leukemia** at the Shanghai Institute of Hematology.

We brought together scientists at the Harvard Cancer Center and the Dana-Farber Cancer Institute to **develop a targeted therapy for a rare childhood cancer**, which is currently in clinical trials.

We advanced the paradigm of treatment for lung cancer by adding targeted drugs to chemotherapy through a collaboration between Dartmouth and Mount Sinai.

A YEAR OF IMPACT & INNOVATION

The Samuel Waxman Cancer Research Foundation's 37th year of funding epigenetic science to cure cancer brought new scientific collaborators, exciting joint grants and successful editions of our signature fundraising events.

JANUARY

The SWCRF began the year by updating its website - waxmancancer.org - and welcoming new members to its Board of Directors: **David Hinkelman, Managing Director of Fortress Investment Group LLC**, **Howard Kurz, founder of**

Lily Pond Capital Management, **Matthew Lyons, Chairman and CEO, Blue Slate, LLC**, **Riva Ariella Ritvo-Slifka** and **Robert Kantor** as Board President.

MAY

Scientists from the SWCRF's Institute Without Walls congregated at the New York Academy of Medicine May 13 to 14 for the annual Scientific Review and Symposium. **Ronald M. Evans, Ph.D., Professor, The Salk Institute for Biological Studies**, was presented the Lifetime Achievement Award in Science and **Wesley Edens, Co-Founder, Principal and Co-Chairman of the Board of Directors, Fortress Investment Group**, received the Spirit of Collaboration Award.



Ethan Dmitrovsky, M.D. and Ronald M. Evans, Ph.D.

JULY

The SWCRF awarded \$2 million in grants, renewing 22 collaborative grants and welcoming three new researchers to the Institute Without Walls: **Gregory David, Ph.D., Associate Professor, NYU School of Medicine**, (working in pancreatic cancer), **Jayanta Debnath, M.D., Associate Professor, University of California San Francisco**, (triple-negative breast cancer), and **Yang Shi, Ph.D., Professor, Boston Children's Hospital/Harvard Medical School** (acute myeloid leukemia).

Our 31st Annual Golf Tournament, co-sponsored by **The Max Cure Foundation**, took place July 11 at The Creek in Locust Valley, NY. Hosted by Tony and Cynthia Shogren, the outing honored SWCRF Board Member **Gary Jacob, Executive Vice President of Glenwood Management Corp.**, and raised nearly \$200,000.



Dennis Herman, Gary Jacob and Michael Nierenberg

JULY CONTINUED

The annual “A Hamptons Happening” raised close to \$400,000 on July 27. Held at the Bridgehampton estate of Maria and Kenneth Fishel, the affair drew 400 guests who enjoyed cuisine presented by honoree chef **Todd English** and five of his signature restaurants, along with 30 other top chefs and restaurants from New York City and The Hamptons. The event also honored fashion industry icon **Ruth Finley**, founder and publisher of The Fashion Calendar, and was hosted by CBS 2 News anchor **Chris Wragge**.

The SWCRF teamed up with **The Max Cure Foundation**, a pediatric cancer research organization, for a joint \$100,000 grant for acute megakaryocytic leukemia research awarded to **John Crispino, Ph.D.**, the **Robert H. Lurie Comprehensive Cancer Center of Northwestern University** and **Shai Izraeli, M.D.**, Tel Aviv University.



Todd English, Marion Waxman and Samuel Waxman, M.D.

AUGUST

The SWCRF and **The National Foundation for Cancer Research** created a \$100,000 annual joint grant supporting a collaboration between **Curt Civin, M.D.**, **University of Maryland School of Medicine**, and **Yongkui Jing, Ph.D.**, **Mount Sinai Medical Center**, to repurpose a group of malaria drugs to treat leukemia.

SEPTEMBER

The SWCRF and the **Triple Negative Breast Cancer Foundation** launched a joint grant supporting scientists collaborating on research to make triple-negative breast cancer cells more responsive to hormonal therapy and reduce their ability to metastasize. Each foundation will contribute \$50,000 annually to the grant for the next three years. The grantees include **Samuel Waxman, M.D.**, **Ming-Ming Zhou, Ph.D.**, and **Eduardo F. Farias, Ph.D.**, **Mount Sinai Medical Center**, and **Arthur Zelent, Ph.D.**, **Sylvester Comprehensive Cancer Center, University of Miami**.

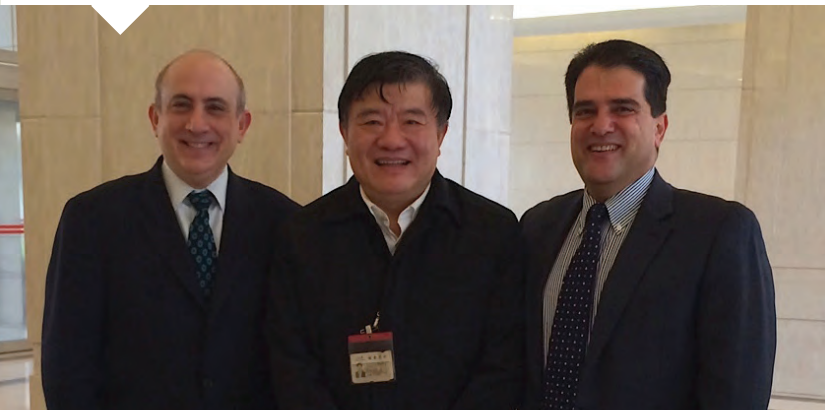
NOVEMBER

On November 16 and 17, SWCRF Chief Scientific Officer Jonathan Licht, M.D., and Chief Mission Officer Alan Rosmarin, M.D., traveled to Shanghai where Dr. Licht and China's former Minister of Health, Zhu Chen, M.D., Ph.D., spoke about collaboration at the prestigious Sino-American Symposium. Dr. Licht was named a consulting professor at Shanghai Jiao Tong University and he and Dr. Rosmarin reviewed SWCRF-funded research sites at the Shanghai Institute of Hematology.



Tadashi Shoji and Andrea Powell

The SWCRF raised nearly \$3 million at its 16th annual Collaborating for a Cure gala benefit on November 21. Featuring a performance by the pop band Train, the fundraiser honored **Arthur Imperatore Sr.**, COO of the New York Waterway, and fashion designer **Tadashi Shoji**. Hosted by SWCRF's **Chairman Michael Nierenberg** and his wife **Elin**, the event was emceed by CBS 2 News anchor **Chris Wragge**.



Jonathan Licht, M.D., Zhu Chen, M.D., Ph.D., and Alan Rosmarin, M.D.

WE THINK COLLABORATIVELY, PROVOCATIVELY, AND GLOBALLY.

We have to, in order to beat cancer.

OUR DISTINGUISHING FEATURE IS OUR FREELY COLLABORATING NETWORK OF ACCOMPLISHED SCIENTISTS, THE INSTITUTE WITHOUT WALLS.



Albert Baldwin, Ph.D.,
UNC Chapel Hill

“My relationship with the SWCRF has been one of the most fulfilling experiences of my scientific career. First, and most importantly, Dr. Waxman leads this broad group of outstanding scientists and clinicians by inspiring us to achieve new breakthroughs in cancer research and treatment,

while challenging us to do our very best work to ultimately impact the cancer patient. I am unaware of a cancer research foundation that is led by such an accomplished, caring and active scientist and clinician. Second, the creative vision of the Institute Without Walls has generated a highly collaborative network involving

renowned cancer research scientists from Europe, Israel, Canada, Asia, and the U.S. Since joining the SWCRF my group has published collaborative work with colleagues from Memorial Sloan Kettering, Columbia, Virginia Commonwealth, McGill, and UCSF. It is unlikely that any of this work would have been initiated without the SWCRF. Third, the SWCRF has assembled a team of highly dedicated administrative and program leaders to make all of our efforts flow in a highly effective manner. The research scientists are inspired by the dedication of this group and by the supportive and equally dedicated members of the board of directors. The SWCRF has created a real family committed to one goal: effective treatment of cancer and improved outcomes for the patient.”

WE SEEK SOLUTIONS THROUGH UNCONVENTIONAL AND PROVOCATIVE APPROACHES TO CANCER RESEARCH



Gregory David, Ph.D.,
New York University

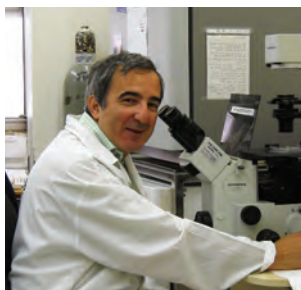
Our research has focused on pancreatic cancer, a devastating and fast progressing type of cancer. With the help of an award from the SWCRF, we made the surprising discovery that a process that was widely thought to prevent cancer progression, known as cellular senescence, was instead

contributing to pancreatic cancer progression. Such an

unexpected discovery warranted further investigation, but the provocative hypothesis that was to be tested made it difficult to secure funding from classical sources. The award we obtained from the foundation enabled us to investigate a novel idea, and attack cancer using ways that have so far remained mainly unexplored by the community at large. As it is becoming obvious that different types of cancer rely on unique molecular pathways to evolve and progress, approaches like ours will undoubtedly serve as a new framework for future cancer research in the hope of identifying new drugs for the clinic.”

READ ABOUT IT, TELL SOMEONE ELSE, THEN JOIN US.

ON YOUR BEHALF, WE SEEK RESULTS EVERYWHERE IN THE WORLD WHERE THERE IS AMAZING TALENT AND A WILL TO BEAT CANCER



Shai Izraeli, MD,
Tel Aviv University

“Cancer research during the last five decades has transformed the outcome of childhood leukemia - from no survivors to more than 85% cured! Yet this remarkable achievement comes with a price. Two to three years of highly toxic chemotherapy associated with many weeks to months of hospitalization

with serious complications. Children who survive can expect a normal life, yet many suffer from the long-term toxicity of chemotherapy. Our goal is to cure all children with leukemia, just once, and for good. The SWCRF’s support of our research has already led to the discovery of a previously unknown subtype of childhood leukemia with a particularly bad prognosis. Fortunately, the

fundamental process driving this leukemia is amenable to novel therapies and clinical trials are already in progress. Your funding has been critically important for the success of our research. It has allowed me to take risks and explore uncharted roads. Your funding has been especially significant since my laboratory is located in Israel, a country with many bright scientists but with relatively poor funding for medical research. Importantly, the SWCRF is not only about funding: no less important than research money is the opportunity to interact with many outstanding cancer physicians and scientists in the unique Institute Without Walls. The synergistic collaborations with other SWCRF scientists have been critical for the success of our projects. Both research support and the research environment provided by the SWCRF are assisting us in our journey to uncover secrets and overcome childhood leukemia.”

WE HAVE BEEN BREAKING NEW GROUND SINCE THE 70’S, BUT THE “WAR ON CANCER” IS FAR FROM OVER



Julio Aguirre-Ghiso, Ph.D.,
Mount Sinai

“The majority of cancer patients die from incurable metastases that sometimes can take decades to develop. This is largely due to the persistence of dormant tumor cells that can eventually become re-activated. Our work has provided a first molecular description of dormant disseminated cancer; by better understanding

the biology of dormancy, now we have potential therapeutic strategies to eradicate dormant cancer. The SWCRF has funded our work on the biology of cancer dormancy since 2004, and after almost 10 years our program has grown to have national and international impact at a much higher level than we ever expected. Slowly but surely the SWCRF has propelled a revolution in knowledge and potential treatment options by supporting our research. In turn, by supporting the SWCRF anyone can contribute to changing the landscape of cancer detection and treatment in a way that we have not witnessed since the “War on Cancer” was launched in the 70’s.”

BLOOD MALIGNANCIES

Ravi Bhatia, M.D., *City of Hope*
Brad Cairns, Ph.D., *University of Utah*
Sai-Juan Chen, M.D., Ph.D., *Shanghai Institute of Hematology*
John D. Crispino, Ph.D., *Northwestern University*
Margaret Goodell, Ph.D., *Baylor College of Medicine*
Yongkui Jing, Ph.D., *Mount Sinai Medical Center*
David A. Jones, Ph.D., *University of Utah*
Ross Levine, M.D., *Memorial Sloan Kettering*
Jonathan D. Licht, M.D., *Northwestern University*
Ari Melnick, M.D., *Weill Cornell Medical Center*
Warren Pear, M.D., Ph.D., *University of Pennsylvania*
Ruibao Ren, M.D., Ph.D., *Brandeis University*
Samuel Waxman, M.D., *Mount Sinai Medical Center*
Arthur Zelen, Ph.D., *University of Miami*

BRAIN CANCER PROGRAM

Albert S. Baldwin, Jr., Ph.D., *University of North Carolina, Chapel Hill*
Mark Lemmon, Ph.D., *University of Pennsylvania*
Kevan Shokat, Ph.D., *University of California, San Francisco*
William Weiss, Ph.D., *University of California, San Francisco*

BREAST CANCER PROGRAM

Albert S. Baldwin, Jr., Ph.D., *University of North Carolina, Chapel Hill*
Stephen Baylin, M.D., *Johns Hopkins University*
Robert A. Casero, Ph.D., *Johns Hopkins University*
Jayanta Debnath, M.D., *University of California San Francisco*
Eduardo Farias, Ph.D., *Mount Sinai Medical Center*
Doris Germain, Ph.D., *Mount Sinai Medical Center*
Wilson Miller, M.D., *Jewish General Hospital*
Samuel Waxman, M.D., *Mount Sinai Medical Center*
Robert A. Weinberg, Ph.D., *Whitehead Institute for Biomedical Research*
Cynthia Zahnow, Ph.D., *Johns Hopkins University*
Arthur Zelen, Ph.D., *University of Miami*
Ming-Ming Zhou, Ph.D., *Mount Sinai Medical Center*

CANCER STEM CELL PROGRAM

Julio Aguirre-Ghiso, Ph.D., *Mount Sinai Medical Center*
Nabeel Bardeesy, Ph.D., *Massachusetts General Hospital*
Stephen Baylin, M.D., *Johns Hopkins University*
Ravi Bhatia, M.D., *City of Hope*
Robert A. Casero, Ph.D., *Johns Hopkins University*
Margaret Goodell, Ph.D., *Baylor College of Medicine*
Robert A. Weinberg, Ph.D., *Whitehead Institute for Biomedical Research*
Cynthia Zahnow, Ph.D., *Johns Hopkins University*

CHILDHOOD AND YOUNG ADULT CANCERS

Albert Baldwin, Jr., Ph.D., *University of North Carolina, Chapel Hill*
James E. Bradner, M.D., *Dana-Farber Cancer Institute*
John D. Crispino, Ph.D., *Northwestern University*
Christopher A. French, M.D., *Brigham and Women's Hospital*
Shai Izraeli, M.D., *Tel Aviv University*
Mark Lemmon, Ph.D., *University of Pennsylvania*
Yang Shi, Ph.D., *Boston Children's Hospital & Harvard Medical School*
Kevan Shokat, Ph.D., *University of California, San Francisco*
Erwin G. Van Meir, Ph.D., *Emory University School of Medicine*
William Weiss, M.D., Ph.D., *University of California, San Francisco*

COLON CANCER PROGRAM

Ronald Evans, Ph.D., *Salk Institute*
Reuben Shaw, Ph.D., *Salk Institute*
Brad Cairns, Ph.D., *University of Utah*
David Jones, Ph.D., *University of Utah*



LIVER CANCER PROGRAM

Stephen Baylin, M.D., *Johns Hopkins University*
Josep M. Llovet, M.D., *Mount Sinai Medical Center*
Devanand Sarkar, M.B.B.S., Ph.D., *Virginia Commonwealth University*
Samuel Waxman, M.D., *Mount Sinai Medical Center*

LUNG CANCER PROGRAM

Duane Compton, Ph.D., *Dartmouth Medical School*
Ethan Dmitrovsky, M.D., *MD Anderson Cancer Center*

MOUNT SINAI MEDICAL CENTER - SWCRF LABORATORY (MSMC)

Julio Aguirre-Ghiso, Ph.D., *Mount Sinai Medical Center*
Eduardo Farias, Ph.D., *Mount Sinai Medical Center*
Doris Germain, Ph.D., *Mount Sinai Medical Center*
Yongkui Jing, M.D., *Mount Sinai Medical Center*
Boris Leibovitch, Ph.D., *Mount Sinai Medical Center*
Samuel Waxman, M.D., *Mount Sinai Medical Center*

DEVELOPING EPIGENETIC THERAPY

Stephen Baylin, M.D., *Johns Hopkins University*
Robert Casero, Ph.D., *Johns Hopkins University*
Sai-Juan Chen, Ph.D., *Shanghai Institute of Hematology*
John D. Crispino, M.D., *Northwestern University*
Ronald Evans, Ph.D., *Salk Institute*
Alan Friedman, M.D., *Johns Hopkins University*
Margaret Goodell, Ph.D., *Baylor College of Medicine*
Shai Izraeli, M.D., *Tel Aviv University*
Yongkui Jing, Ph.D., *Mount Sinai Medical Center*
Jonathan D. Licht, M.D., *Northwestern University*
Alexander MacKerell, Ph.D., *University of Maryland*
Ari Melnick, M.D., *Weill Cornell School of Medicine*
Wilson Miller, M.D., Ph.D., *Jewish General Hospital*
Kevin Petrie, Ph.D., *Institute of Cancer Research, London*
Gilbert Privé, Ph.D., *University of Toronto*
Ruibao Ren, M.D., Ph.D., *Brandeis University*
Samuel Waxman, M.D., *Mount Sinai Medical Center*
Yue Xiong, Ph.D., *University of North Carolina, Chapel Hill*
Arthur Zelen, Ph.D., *University of Miami*
Ming-Ming Zhou, Ph.D., *Mount Sinai Medical Center*

PANCREATIC CANCER PROGRAM

Nabeel Bardeesy, Ph.D., *Massachusetts General Hospital*
Gregory David, Ph.D., *NYU School of Medicine*

SIH/SWCRF CO-PI PROGRAM

Sai-Juan Chen, Ph.D., *Shanghai Institute of Hematology*
Zhu Chen, M.D., Ph.D., *Shanghai Institute of Hematology*

TUMOR DORMANCY PROGRAM

Julio Aguirre-Ghiso, Ph.D., *Mount Sinai Medical Center*
Eduardo Farias, Ph.D., *Mount Sinai Medical Center*



THE TAUB FAMILY'S LEGACY OF GIVING

While families who've had business success through generations are many, those who pass down a philosophy of giving are precious and noteworthy. A commitment to philanthropy was a hallmark of the late David S. Taub, an icon in the wine and spirits industry and a true gentleman whom the Samuel Waxman Cancer Research Foundation (SWCRF) greatly misses.

Building Palm Bay International into a leading wine importer since founding the company in 1977 with his father Martin, David's commitment to philanthropy equaled his business drive and savvy. He was the epitome of an active supporter

of important causes and the SWCRF is fortunate and grateful to be among the organizations that benefited from his generous spirit and kind heart.

After David's son Marc assumed leadership of Palm Bay, he upheld the company's reputation for quality product and service and its philanthropic heritage. Marc is active on the boards and committees of several nonprofits, continuing the Taub family tradition of community service. As we remember our beloved friend David S. Taub, we thank Marc Taub and Palm Bay for their continued support.

THANK YOU

The following donors have shared The Samuel Waxman Cancer Research Foundation's vision and belief in collaboration by generously funding the Foundation's Institute Without Walls in 2013.

\$200,000 +

Emerald Foundation, Inc.
Mr. and Mrs. Reuben Mark
Mr. and Mrs. Michael B. Nierenberg
Soros Fund Charitable Foundation

\$100,000 - \$199,999

The Rose M. Badgeley Charitable Trust
Mr. and Mrs. Wesley Edens
Mr. and Mrs. Arminio Fraga
Ms. Mary Henry and Mr. Howard Rubin
Ms. Julia Nussibeh
The Skirball Foundation

\$50,000 - \$99,999

Mr. and Mrs. Scott Eichel
Mrs. Musa Mayer and Mr. Thomas R. Mayer
Mr. Martin Migliara
Mr. and Mrs. Randal A. Nardone
Mr. Charles Sorrentino
Tadashi Shoji
Three Strohm Sisters Family Foundation
Triple Negative Breast Cancer Research
Foundation
Mr. and Mrs. Jeffrey Verschleiser
Bettina and Spencer Waxman

\$20,000 - \$49,999

Bank of America
Jack and Florence Berlin Foundation
Mr. Brian Carosielli
Mr. and Mrs. Peter Cherasia
Mr. Brian Chin
Mr. and Mrs. Peter Claman
Laura and James DeMare
Mr. and Mrs. Johan Eveland
Mr. Kenneth Fishel

Good Hill Partners
Hatteras Financial Corporation
Mr. W. David Hinkelman
Mr. Arthur E. Imperatore Sr.
Mr. Gary Jacob
Mr. Mike Joo
Mr. Adam Katz
Magna Motors
Mr. Thomas Marano
The Max Cure Foundation
Mr. and Mrs. Jeffrey Mayer
Mr. Matthew McQueen
Mr. and Mrs. Glenn Myles
Morgan Stanley
Mr. and Mrs. Craig Overlander
Andrew Sabin Family Foundation
Mara and Baron Silverstein
Alan B. Slifka Foundation
Mr. Nicholas P. Smith
Mr. and Mrs. Richard Spitz
Mr. and Mrs. Joseph G. Steffa, Jr.
Mr. and Mrs. Laurence Tarica
Mr. and Mrs. Marc D. Taub
Titan Advisors
Tsai Fan Yu Foundation

\$10,000 - \$19,999

Access Securities
Alston & Bird
Bingham McCutchen LLP
Mr. and Mrs. John D. Brewer, Jr.
BTIG, LLC
Mr. Thomas J. Carroll
Mr. and Mrs. Matthew R. Chasin
Mr. Steven Choran
Mr. Kenneth Cohen
Mr. Michael Corasaniti
Credit Suisse
Mr. Rafic Dahan
Mr. and Mrs. Mark Davies
Mr. Mark R. Lehrer
Mr. David Dietche
Mr. Jesse Elhai
EverBank
The G & A Foundation
Mr. Stephen Gargiulo
Dr. Roger Gilbert
Ms. Giselle Gerson
Ms. Sylvia Golden
Goldman Sachs & Co.
Mr. and Mrs. Steven Gordon
Mr. and Mrs. Clifford Greenberg
Ms. Felicia Grumet and Mr. Mitchell Levine

Mr. and Mrs. Marshall Insley
Jefferies LLC
Mr. Jeffrey Johnson
Mr. Adam L. Kahn
Mr. Bernard Kaminsky
The Drew A. Katz Family Foundation
Mr. Michael Kenney
Mr. and Mrs. Howard Kurz
Mr. and Mrs. Jay Levine
Lily Pond Capital Management
MFA Financial Inc.
Mr. and Mrs. Ira Nierenberg
Och-Ziff Capital Management Group
Mr. Michael O'Leary
Options Group
Palm Bay International
Mr. and Mrs. Jeffrey Perlowitz
Mr. Randy Reiff
Mr. and Mrs. Elihu Rose
Mr. and Mrs. Andrew Sloves
Mr. and Mrs. Marc Spilker
Springleaf Financial Services
Sun Capital Partners, Inc.
Mr. and Mrs. Alan L. Tyson
Dr. and Mrs. Samuel Waxman
Ms. Dena K. Weiner and Mr. David Rozenholz
Mr. and Mrs. Joshua B. Weintraub
Norman and Rosita Winston Foundation
Mr. and Mrs. Robert Yaffe
Mr. and Mrs. Matthew Zisette

\$5,000 - \$9,999

Mr. and Mrs. Joseph Ades
Anonymous
Mr. and Mrs. William Arnold
Ms. Beth Bolander
Mr. George K. Brommer, III
Mr. Eric Brophy
Cantor Fitzgerald Securities
Capital One
CBRE
Mr. and Mrs. Marvin Chudnoff
Mr. Michael Commaroto
Mr. Martin L. Coyne
Mr. Thomas Durkin
Mr. and Mrs. Brad Egna
Mr. and Mrs. Robert Eichler
Estate of Helen Genna
Mr. and Mrs. Joseph Feshbach
Mr. and Mrs. Robert Fishbein
Mr. Christopher Flanagan
Foley Inc.
Ms. Doreen M. Frasca

Ms. Jeanmarie Genirs and Mr. Paul Josling
Mr. and Mrs. Bill Gibbs
Mr. and Mrs. Gary Gladstein
Goodrich Management LLC
Grand Prix of America at Port Imperial
Mr. Steven Grapstein
The Frank J. Guarini Foundation
Ms. Mary P. Haggerty
Mr. and Mrs. Dennis A. Herman
Paul R. Jones Trading Co.
Mr. Alex Klabin
Connie and Harvey Krueger
Mr. and Mrs. David Lavipour
Mr. Alexander Libin
Mr. and Mrs. Jonathan Lieberman
Mr. and Mrs. Leonard Litwin
Mr. Doug Logigian
M & T Bank
Mr. and Mrs. Steve Mayer
Mr. and Mrs. Charles McGuffog
Mr. Seemant Menon
Mr. and Mrs. Rick Miller
Dana and Michael Miller
Ms. Cynthia Neiditch
Neiman Marcus
Pantao
Mr. Nilam R. Patel
Mr. and Mrs. Glenn Pere
Mr. Patrick Peyton
Mr. William Procida
Raymond James Financial
Mr. and Mrs. Robert J. Richter
River Road
The Amy Taylor and Nelson Rockefeller, Jr. Fund
Mr. Andrew Sale
Mr. and Mrs. Charles Schaffran
Mrs. Edwin C. Scheurer
Mr. and Mrs. Greg Schwab
Mr. Brad Scott
Seastreak
Mr. and Mrs. Tony M. Shogren
Mr. Frank Y. Skibo
Solow Realty and Development Company, LLC
Ms. Mary Stone and Mr. Channing Creecy
Mr. Darren C. Stumberger
Mr. and Mrs. Joseph F. Valentine
Ms. Adele Weiner
Wells Fargo
Whitton-Spector Foundation
Ruth Winkelman Wender Foundation
Mr. Mitchell Winter
York Restoration Corporation

\$1,000 - \$4,999

Mr. and Mrs. Myron Adler
Mr. Jonathan Allen
Almitas Capital
Mr. and Mrs. Lee Alper
Mr. Mario Andreani
Anonymous
Judith and Alan Appelbaum
Mr. Ricardo Arguello
Arlotta Enterprises, Ltd.
Atlantic Power Systems
Mr. and Mrs. Jonathan E. Babkow
Bank of America Matching Gifts Program
Barclays North America
Mr. and Mrs. Frederick W. Barney, Jr.
Mr. and Mrs. JP Bartolomeo
Mr. Joseph Barry
Steven and Penny Beberman
Mr. Ryan Berger
Mr. and Mrs. Peter Berk
Mr. Jason Biegel
Mr. Bill Birnbaum
Bloomingdales
BNY Mellon Wealth Management
Mr. and Mrs. Jonathan W. Bonesteel
Mr. Tom Boran
Mr. and Mrs. Brian Bornstein
Mr. Stanley Brach
Ms. Louise L. Braver
Mr. and Mrs. Theodore Breck
Ms. Sheri Bronstein
Brooks Brothers
Ms. Bobbi Brown and Mr. Steven Plofker
Mr. Michael Buttner
C & J Unanue Foundation, Inc.
Bonnie and David Cantor
Capital Craftsman
Mr. and Mrs. Jeffrey Caress
Ms. Julie Carlson
Mr. and Mrs. Joseph Ceccarini
Mr. and Mrs. Phil Cedar
Centurion Holdings LLC
Century21
Chado Ralph Rucci, LLC
Ms. Debrah Charatan and Mr. Steve Holm
Ms. Jisook Choi
CIT
City Of Hope
ClearCapital
Ms. Jessica Cohen
Debbie and David Cohen
Marilyn and Sonny Cohn

Mr. Thomas Coleman
Ms. Wynne Comer
Mr. Michael Contillo
Mr. and Mrs. Thomas A. Conway
Mr. Noah Cooper
Mr. Frank Cornett
Mr. TC Cosby
Ms. Wendy Costa
Mr. Ryan Craft
Mr. David H. Crean
Mr. and Mrs. Richard J. Crescenzo
Cunard Line
Mr. Apurva Dabholkar
Ms. Cindy Day
Mr. Conrad Dequattro
Ms. Christina DeSimone
Mr. Jeffrey Desind
Ms. Ellen L. Diamond
Mr. Frank DiBartolo
Mr. Jordan Dickstein
The DIVA Foundation
Dr. and Mrs. Ethan Dmitrovsky
Mr. Thomas J. Doherty
Ms. Adina Dolfman
Mr. Patrick Downes
Dr. Susan Drossman and Mr. Adam Sokoloff
Mr. Robert Durden
DVF Studio
Ms. Elizabeth Miracky
Mr. and Mrs. Jim Egan
Ms. Blake Eger
Mr. and Mrs. Richard A. Eimbinder
Mr. and Mrs. Robert Elman
ENK
Ms. Jayme Fagas and Mr. Paul Strauch
Mr. Timothy P. Fallon
Ms. Karen X. Fang
Stefanie and Paul Feidelson
Mr. and Mrs. Robert Feidelson
Mr. Jim Finkel
Mr. Mark Fisher
Mr. David Flannery
Mr. Barry Fleck
Fragrance Group
Mr. and Mrs. Peter Frank
Mr. and Mrs. James E. Frankel
Mr. and Mrs. Paul Friedman
Mr. Daniel Frommer
Ms. Carol Fuller Venezia
Mr. Keith Garde
Mr. Christopher Garvie
Mr. Kevin Gately
Genova Burns Giantomasi Webster LLC

Gess Donor Fund, A Donor Advised Fund of
the Combined Jewish Philanthropies
of Greater Boston, Inc.

Mr. and Mrs. Andy Glenn

Ms. Cheryl Glory

Mr. Adam Goldberg

Ms. Leslie Goldwasser

Gotham Construction

Mr. Jeffrey D. Gravelle

Greenberg Glusker

Mr. Robert M. Grillo

Dr. and Mrs. Jeffrey Gropper

Mr. and Mrs. Peter S. Grouev

Mr. Mohil Gupta

Mr. and Mrs. William P. Hackett

Ms. Eve K. Hall

Mr. and Mrs. James Harrington

Wilton A. Hawkins

Ms. Jean Heinig

Mr. and Mrs. Jeffrey Hendren

Ms. Lisa Herbert

Ms. Adrienne Gordon and Mr. Gary Herman

Mr. Ralph Herzka

Mr. and Mrs. William Heskett

Hess Energy Marketing, LLC

Mr. and Mrs. Patrick Higgins

HL Group

Mr. and Mrs. Daniel J. Hoffman

Mr. Michael Hokin

James Volpe Foundation, Inc.

Florence and Evan Janovic

Jewish Community Foundation of
Metrowest New Jersey

Mr. Charles Jin

Mr. Brodie Johnson

Mr. William H. Johnston

Mr. and Mrs. Kenneth Joseph

Mr. Naphtali Joseph

Dr. Kevin Jovanovic

JP Morgan

Mr. Ian Kahn

Mr. Andrew Kail and Ms. Heidi Kurlander

Mr. and Mrs. Gerald P. Kaminsky

Mr. Brian F. Kane

Mr. and Mrs. Robert Kantor

Ms. Mary Y. Kantor

Mr. and Mrs. Allen Kaplan

Mr. and Mrs. Marc Kaplan

Mr. Mike Karp

Karuna Foundation

Mr. Howard Kaskel

Deena and Erik Katz

Mariana and George Kaufman

Ms. Tracey Keegan

Mr. Christopher Kelly and
Mrs. Etta Lamberti-Kelly

Mrs. Sharon Wilkes Kinberg and
Mr. Robert Kinberg

Mr. David J. Klein

Koopersmith Klein LLC

Kraft Power Corporation

Kramer Levin Naftalis & Frankel

Mr. and Mrs. Andrew Kramer

Mr. Morris Kramer

Mr. Eric L. Kriftcher

Mr. and Mrs. Josh Kuriloff

Kurland Family Foundation

Mr. Joseph La Delfa Jr.

Mr. and Mrs. Michael Labadorf

Mr. and Mrs. Steve Lapham

Mr. Carey F. Lathrop

Mr. and Mrs. Norman Lattman

Laviano Jewelers

Mr. Larry Lein

Ms. Laila Levitas

Mr. and Mrs. Laurence R. Levy

Mr. Paul Levy

Mr. John J. Lewin

Dr. and Mrs. Jonathan D. Licht

Mr. Daniel Lichtenberg

LIM College

Ms. Erica Linden-Fineberg

Mr. and Mrs. Kevin Ling

Mr. and Mrs. Avery Lipman

Mr. and Mrs. George A. Livingston

Mr. Joe Lizzio

Mr. John Locke

Lord & Taylor / Hudson's Bay Company

Ms. Julie Luttinger

Mr. and Mrs. Matt Lyons

The David & Sondra Mack Foundation

Linda and Harry Macklowe

Ms. Romy Malbin

Mr. and Mrs. Harvey Mallement

Ms. Jennifer Maloni

Mr. Denis Manelski

Marcus & Associates, LLC

Massachusetts General Hospital Cancer Center

Mr. Matt Masso

Mr. Michael Mazzei

McCarter & English, LLP

McLaren Engineering Group

Memorial Sloan-Kettering Cancer Center

Mr. and Mrs. Mark Michael

Mr. Alan Mittleman

Mr. Milton Miyashiro

Mr. Peter Mondics

Mr. Erik W. Muller

Mr. and Mrs. Bob Munsey

Mr. and Mrs. Stephen J. Muto

Mr. and Mrs. Ari Nathan

Mr. Jared Nearpass

New York Cruise Lines

Mr. George Ngo

Mr. Gary Nicklaus

Ms. Theresa O'Neill

Ms. Jessica Oppenheim

Orrick, Herrington & Sutcliffe LLP

Ms. Lauren Osborne

Paramount Beauty

Mr. and Mrs. Michael J. Pascarella

Ms. Eve Patton

Mr. and Mrs. Arnold S. Penner

Mr. Matt Perkal

Mr. and Mrs. Michael Petteruti

Mr. Jerome Pickholz

Mr. Antony Piperno

The Plaza Hotel

Mr. and Mrs. Richard Plotkin

Jamie and Mark Pollack

Present, Cohen, Smallowitz, Glassman,
Strebel and Klein

Ms. Jen B. Press

Prince Carpentry, Inc.

Public Strategies Impact

Mr. and Mrs. Salvatore L. Puliafico

Mr. Philip Radus

Ms. Rashaan Reid

Mr. Rob Roberto

Mrs. Flori Roberts

Mr. Mark F. Rockefeller

Rockrose Development Corp.

The Isabel Rose Foundation

Roseland Property

Mr. Mark Rosen

The Rosenberg Foundation

Dr. and Mrs. Alan Rosenfeld

Mr. and Mrs. Robert Rotanz

Rubenstein Associates

Dr. and Mrs. Steven Rubin

Mr. and Mrs. Michael I. Rudell

Rudin Management Co.

Rustan Commerical Corporation

Mr. and Mrs. John Ryding

Mr. and Mrs. David Sachs

Mr. Warren Saft

Mr. Benny Salerno

Sante Fe Community Foundation

Mrs. Leah P. Sanzari

Mr. Jeffrey Saporta
Scales Foundation
Mr. and Mrs. Jerome M. Schneider
Mr. Richard Schwartz
Mr. Gil and Dr. Debbie Schwartzberg
Mr. Christopher Scott
Seafarers' International Union
Mr. Craig Sedmak
Mr. Nicholas Seminara
Mr. John Semrai
Mr. and Mrs. Martin Shafiroff
Mr. and Mrs. Thomas Shea
Mr. and Mrs. Kenneth A. Sherman
Mr. Michael Sherman
Dr. David M. Shipper
Mr. and Mrs. Howard Shlafnitz
Mr. and Mrs. Steven Siegel
Mr. and Mrs. Allen Siegel
Mr. and Mrs. Bernard Sillins
Mr. Gary M. Slutsky
Mr. and Mrs. Michael Sokol
Ms. Debra G. Downing
Mr. David Spector
Ms. Dale Stavin
Mr. Herbert Stein
Ms. Diane Steiner
Mr. Clifford A. Sterling
Mr. Stanley Stern
Mr. Marcus Stinchi
Nancy and Roger Strong
Lee and Roger Strong
Stroock & Stroock & Lavan LLP
Mr. Gary Swidler
Ms. Cynthia Temple
Mr. and Mrs. Andy Tobias
Mr. and Mrs. Jeremy Tocco
Mr. Alan Todd
Mr. and Mrs. Ben Todres
Mr. Howard H. Tomlinson
Mr. Spencer Traino
Mr. and Mrs. David J. Trepanier
Mr. Michael Trokel
Twin America LLC
Mr. and Mrs. John Twyman
US Airways Flight 1549 Passengers
US Bank Private Client Reserve
UT MD Anderson Cancer Center
Mr. Frank J. Valentino
The Vandy Goddesses
Mr. Richard H. Villiers
Mr. Eric Visokey
Mr. Subramani Viswanathan
Ms. Robin Von Bokhorst

Harlan Waksal
Mr. Christopher Walcott
Mr. and Mrs. Michael Walmark
The Floyd and Barbara Warkol
Charitable Foundation
Ms. Andrea Warshaw
Mr. Bryan Weadock
Ms. Evelene Wechsler
Mr. Aaron Welsh
Mr. and Mrs. Michael Weinbaum
Mr. and Mrs. Stephen Weinstein
Whispering Bells Foundation
Mr. and Mrs. Paul Whitman
Mr. and Mrs. Richard Wilpon
Winship Cancer Institute | Woodruff Health
Sciences Center
Dr. and Mrs. Richard A. Wolff
Mr. and Mrs. Joe Woodstock
Mr. and Mrs. F. Kelly Wright
Xinda Embroidery
Ms. Janet Yaseen Kaplan
Jill and Bobby Zarin
Mr. and Mrs. Soofian Zuberi
Mr. and Mrs. Robert Zurl

\$500 - \$999

Mr. Kevin Alexander
All That Buzz
Hayley and Warren Alstodt
Mr. and Mrs. Carl Anderson
The Armand G. Erpf Fund
Mr. Zach Aronson
Moris and Lana Bakhsh
Ms. Marjorie Baldinger
Bank of America United Way Campaign
Ms. Judy Bernardete
Mr. and Mrs. Mark C. Biderman
George and Kathleen Biondo
Ms. LeeAnn Black
Borax Paper Products
Mr. Malcolm A. Borg
Mr. Andrew Castaldo
Castle Oil Corporation
Changshu Jinlilai Textile Co.,
Changzhou Primtex Co., Ltd.
Mr. and Mrs. Lee Charles
Mr. and Mrs. Dean Christensen
Cireca Theranostics
Mrs. Jane Decter
Ms. Rosalind Devon and Mr. Sanford Batkin
DKNY
Mr. Mark Engel
Mr. Todd English
Mr. and Mrs. William Ettelson
Mr. Thomas J. Farrell
Ms. Michele Ferrara
Mr. Jack Feuer
Ms. Carolyn Flamm
Ms. Hayley Foster
Mr. Peter Gaslow
Victoria and Lloyd Goldman
Mr. and Mrs. Robert J. Goldstein
Ms. Casey Grafstein
Mr. Gary C. Granoff, Esq.
Mr. Kenneth Grossman
Amy and Bill Handwerker
Hangzhou Fashionable Co., Ltd.
Mr. and Mrs. Howard Haykin
Mr. and Mrs. Robert Hecht
Mr. Stan Herman
Mrs. Gerry Hodes
Sandy and John Horvitz
Marilyn and Steve Howard
Ms. Wendy Jaffe
Jiangsu Primetex, Ltd.
Mr. Christopher Jonas
Mr. and Mrs. Bill Joseph
Mr. Edward Kass
KCD
Mrs. Iris Keltz
Mr. and Mrs. A. Lawrence Kolbe
Ms. Tatiana Kotchoubey
Mr. and Mrs. Jerry Kremer
Lafayette 148 New York
La Force & Stevens
Dr. and Mrs. Lloyd Landa
Dr. and Mrs. Albert M. Lefkovits
Ms. Jayme Lein
Ms. Kathy Leventhal
Mrs. Phyllis Leventhal
Ms. Alexandra Levine
Jamie Lichtman
Ms. Jayme Liene
Mr. and Mrs. Jeffrey Mann
Mr. Robert Mann
Mr. Craig M. Meltzer
Mr. and Mrs. Alan Morris
Mr. William Muller
Ms. Jacqueline Murphy-Stahl
Mr. and Mrs. Andrew M. Murstein
Neisloss Family Foundation
Alma and Norman Nierenberg
Outdoor Solutions Group
Ms. Debbie Pepper
Mr. and Mrs. Gary Perlman

Mr. Steven Pinshasick
Mr. Joe Plescia
Mr. Dennis B. Poster
Mr. Clay Presley
Mr. and Mrs. Marc Puntas
Mr. Christopher Quinn
Colleen and Gary Rein
Richard Cohen, Inc.
Mr. Dean Roberson
Mr. and Mrs. Bernard Rosenblum
Mr. Martin Rosenman
Mr. and Mrs. Yaron Rosenthal
Jodi and Robert D. Rosenthal Family Foundation
Mr. and Mrs. Eric Rothfeld
Royal Abstract of New York LLC
Elliot and Jocelyn Schnier
Mr. Steven A. Schurkman and Ms. Judith J. Gische
Mr. and Mrs. Michael J. Schwartz, CPA
Shanghai Dielei Textile Co., Ltd.
Mr. and Mrs. Jerome Shapiro
Mr. Stuart Shikiar
Mr. and Mrs. Irwin Siegel
Dr. and Mrs. Howard Sobel
Mr. and Mrs. Richard Solomon
Ms. Jan Stein
Sun Capital Partners Foundation, Inc.
Mrs. Linda Taub
Mr. Moshe Vardi
Mr. and Mrs. Scott Waxman
Mr. and Mrs. Joel Wernick
Mr. Jonathan Wiener
Mr. and Mrs. Lawrence Wilens
Cindy and David Wittels
Lori and Brian Zaslow
Mr. Rostislav Zeygerman

GIFTS WERE MADE IN MEMORY OR IN HONOR OF:

Anna and Louis Ambrosio
Mr. Albert Bensadoun
Ms. Ceccelia Berman
Ms. Emily Brand
Ms. Betty Brown
Mrs. Cindi Burke
Mr. Michael Burkhardt
Ms. Angie Cagegia
Mr. Peter Claman
Mrs. Dale Claman
Mrs. Cris Cleland
Mr. Edward Corallo
Ms. Susan Davis
Ms. Anna Elman
Mr. Stuart Friedman
Chet and Nancy Gilbert

The Honorable Judith Gische
Mrs. Marsha L. Gladstein
Mrs. Judi Gladstein
Mrs. Betty Goldstein
Ms. Sandra Goldstein
Mr. Jack Goler
Mrs. Nancy Golieb
Ms. Elsie Gordon
Ms. Sylvia Hoffman
Ms. Alissa Imperatore
Mr. Arthur E. Imperatore, Sr.
Mr. Gary Jacob
Mr. Joe Janovic
Ms. Catherine Johnston
Mr. Sandy Kadish
Mrs. Mildred Kaminsky
Mrs. Adrienne Kantor
Mrs. Ruth Kaplan
Mr. Adam Katz
Mr. Albert T. Kennedy II
Mrs. Marcia Lavipour
Ms. Carolyn Lax
Mr. Abner Levine
Ms. Pasqualina Lyons
Ms. Elyse Mashbaum
Ms. Sherry Miller
Ms. Lucille Montrony
Elin and Michael Nierenberg
Mr. Joseph R. Paolino, Sr.
Ms. Jessie Pek
Mrs. Phyllis Pickholz
Ms. Katherine Rogers
Salim Sassoon
Mrs. Laurie Schaffran
Mr. Edwin C. Scheurer
Ms. Lynn Schneider
Mr. Daniel Schwab
Mr. Baron Silverstein
Mrs. Alma B. Simmons
Ms. Francine Simon
Dr. Martin Sorger
Marc and Diane Spilker
Mr. Josh Sweitzer
Mr. David S. Taub
Ms. Georgia Triplett
Ms. Pamela Morgan and Mr. Michael Trokel
Mr. Ronald Urvater
Mr. James Volpe
Mr. Robert Wallach
Mrs. Marion Waxman
Dr. Samuel Waxman
Mrs. Sandra Wechsler
Mr. Max Weiner
Dr. Tsai-Fan Yu

A NOTE TO OUR SUPPORTERS

We have carefully reviewed all gifts made to the Samuel Waxman Cancer Research Foundation to ensure each gift is properly recognized. The Thank You list includes all gifts made between January 1, 2013 and December 31, 2013. Gifts mentioned exclude in-kind donations and multiple-year pledges. We make every effort to follow the donor's preferences when compiling the annual report list. If you would prefer to have your name listed differently in the future, please let us know. If we have made a mistake, we sincerely apologize for our error and ask you to bring it to our attention. Please contact Jay Camp at 646-398-5260 so the record may be corrected. Thank you.

Photo credits:

Gala: Rebecca Weiss Photography

Hamptons Happening: Society-in-Focus

Golf Tournament: Jerry Lacay

Scientific Symposium: 5th Avenue Digital

David & Marc Taub: by Jack Miller

Others: Danny Wilcox Frazier

FINANCIAL STATEMENT

(July 1, 2012 - June 30, 2013 audited)

REVENUE

Contributions	\$169,000
Program Grants	2,280,000
Event Income	3,051,000
Investment Income	251,000
	<hr/>
Total Revenue	\$5,751,000

EXPENSE

Program Services	\$3,856,000
Fundraising	1,681,000
Management and General	483,000
	<hr/>
Total Expense	\$6,020,000

SURPLUS/(DEFICIT)	(\$269,000)
--------------------------	--------------------

SAMUEL WAXMAN CANCER RESEARCH FOUNDATION

FOUNDATION TEAM

FOUNDER & CHIEF EXECUTIVE OFFICER: Samuel Waxman, M.D.

CHIEF SCIENTIFIC OFFICER: Jonathan Licht, M.D.

CHIEF MISSION OFFICER: Alan Rosmarin, M.D.

CHIEF OPERATING OFFICER: Jotin Marango, M.D., Ph.D.

DIRECTOR OF SPECIAL EVENTS: Bridget Stein

DIRECTOR OF MARKETING AND COMMUNICATIONS: Edgar Trinidad

DATABASE MANAGER: Jay Camp

OFFICE MANAGER: Amanda Aronson

DEVELOPMENT COORDINATOR: Erica Linden-Fineberg

SCIENTIFIC ADVISORY BOARD:

Steven J. Burakoff, M.D., Riccardo Dalla-Favera, M.D., Lorraine Gudas, Ph.D., Nancy Speck, Ph.D., Hua Yu, Ph.D.

FOUNDATION BOARD

CHAIRMAN: Michael Nierenberg

PRESIDENT: Robert Kantor

VICE PRESIDENTS: Spencer Waxman, Dena K. Weiner

TREASURER: Thomas A. Conway

SECRETARY: Laurie L. Schaffran

BOARD OF DIRECTORS:

Dale Claman, James E. Frankel, Gary Gladstein, Clifford Greenberg, Dennis A. Herman, Linda Herman, David Hinkelman, Alissa Jacob, Gary Jacob, Howard Kurz, Matthew Lyons, Riva Ariella Ritvo-Slifka, Howard Shlafmitz, Tony M. Shogren, David S. Taub**, Samuel Waxman, M.D.

HONORARY BOARD:

Maureen Cogan, Martin L. Coyne, Mary Kantor, Abner Levine**, Mildred Levine, Susan W. Rose, Alan P. Safir *, Joan A. Safir *, Edwin C. Scheurer**, Alfred J. Seaman**, Zena Wiener

CHAIRMAN'S COUNCIL:

Lawrence Altman, Peter Claman, Ruth Finley, Arminio Fraga, Costas Kondylis, Thomas Marano, Tadashi Shoji, Bernard Sillins

* Past Chair **Deceased



420 LEXINGTON AVE. SUITE 825
NEW YORK, NY 10170

TEL: 212-867-4502
SWCRF@WAXMANCANCER.ORG
WAXMANCANCER.ORG